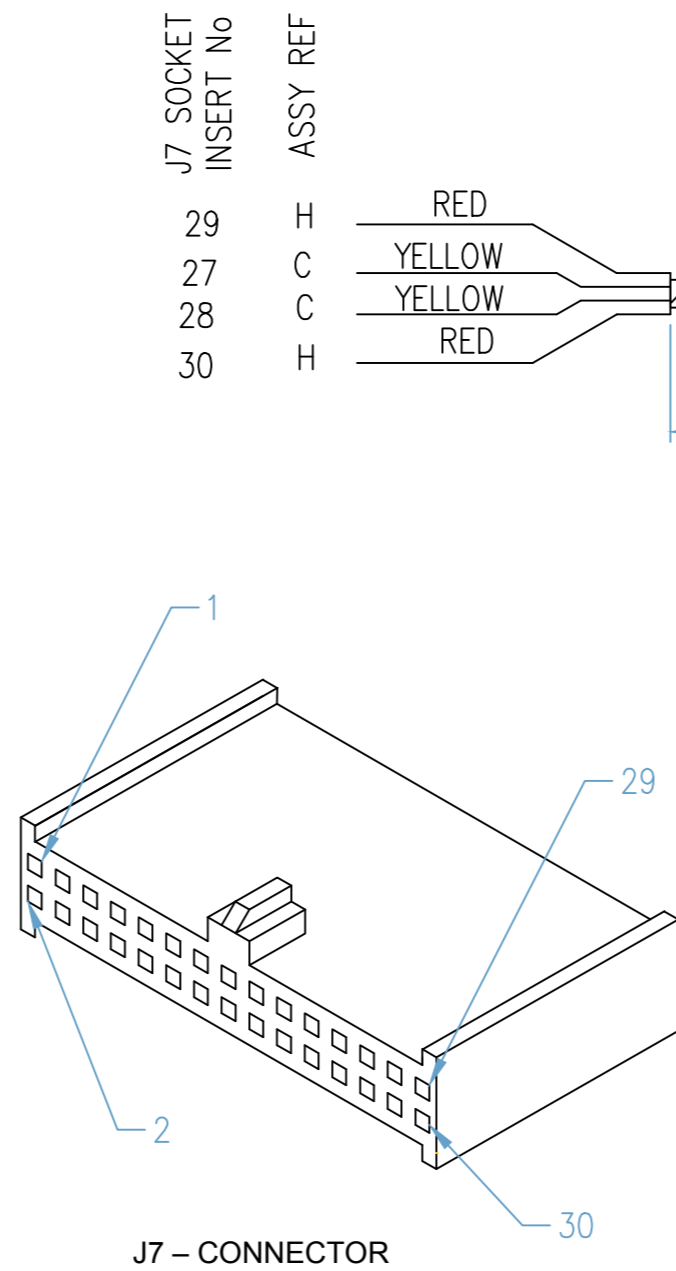
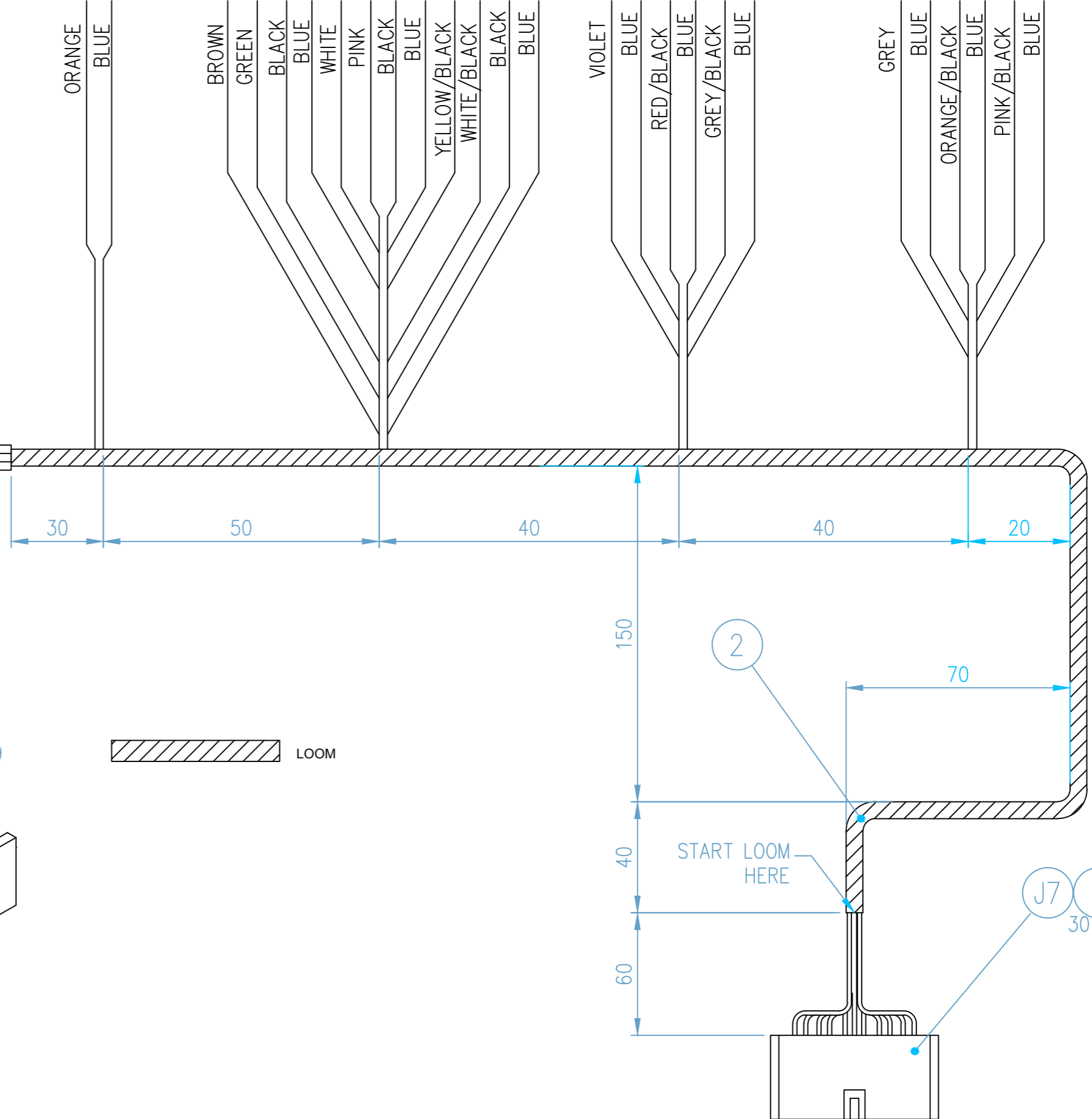


3RD ANGLE PROJECTION

J7 SOCKET INSERT No	WIRE COLOUR	ASSY REF
1	BROWN	A
2	WHITE	K
3	YELLOW/BLACK	P
4	BLACK	D
5	BLACK	D
6	GREEN	E
7	PINK	G
8	WHITE/BLACK	Q
9	BLACK	D
10	ORANGE	B
11	VIOLET	L
12	GREY	J
13	RED/BLACK	M
14	ORANGE/BLACK	N
15	GREY/BLACK	R
16	PINK/BLACK	S
17	BLUE	F
18	BLUE	F
19	BLUE	F
20	BLUE	F
21	BLUE	F
22	BLUE	F
23	BLUE	F
24	BLUE	F
25	BLUE	F
26	BLUE	F
27	YELLOW	C
28	YELLOW	C
29	RED	H
30	RED	H



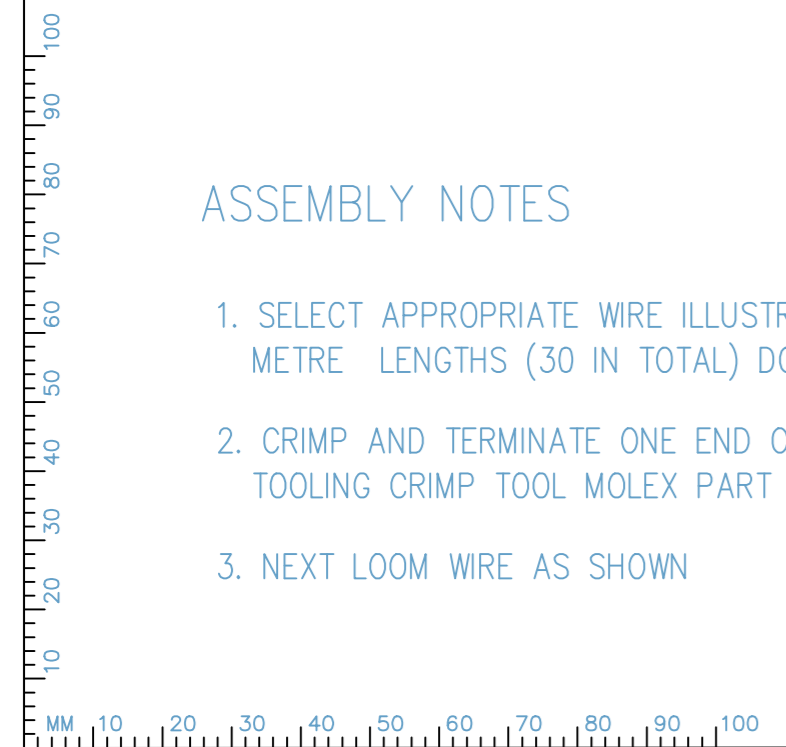
J7 SOCKET INSERT No	ASSY REF	WIRE COLOUR
10 17	B F	ORANGE BLUE
1 6 4 18 2 7 5 21 3 8 9 24	A E D F K G D F P Q D F	BROWN GREEN BLACK BLUE WHITE PINK BLACK BLUE YELLOW/BLACK WHITE/BLACK BLACK BLUE
11 19 13 22 15 25	L F M F R F	VIOLET BLUE RED/BLACK BLUE GREY/BLACK BLUE
12 20 14 23 16 26	J F N F S F	GREY BLUE ORANGE/BLACK BLUE PINK/BLACK BLUE



ASSEMBLY NOTES

1. SELECT APPROPRIATE WIRE ILLUSTRATED IN SHEET 1 AND PARTS LIST, CUT TO ONE METRE LENGTHS (30 IN TOTAL) DO NOT TERMINATE WIRES
2. CRIMP AND TERMINATE ONE END OF EACH WIRE INTO ITEM J7 AS PER TABLE TOOLING CRIMP TOOL MOLEX PART 63819-0200 (FARNELL 169-8816)
3. NEXT LOOM WIRE AS SHOWN

MATERIAL SEE PARTS LIST	TITLE BACKPLANE TO FRONT PANEL CABLE ASSEMBLY		
FINISH SURFACE TEXTURE		TOLERANCES LINEAR +/-10	ORIG. SCALE N.T.S
		DRAWING No. 2AS-B26968	DIM. IN mm VER - REV L00-00 SHT 1 OF 2



3RD ANGLE PROJECTION

J7 – FRONT PANEL CONNECTOR (C GRID)

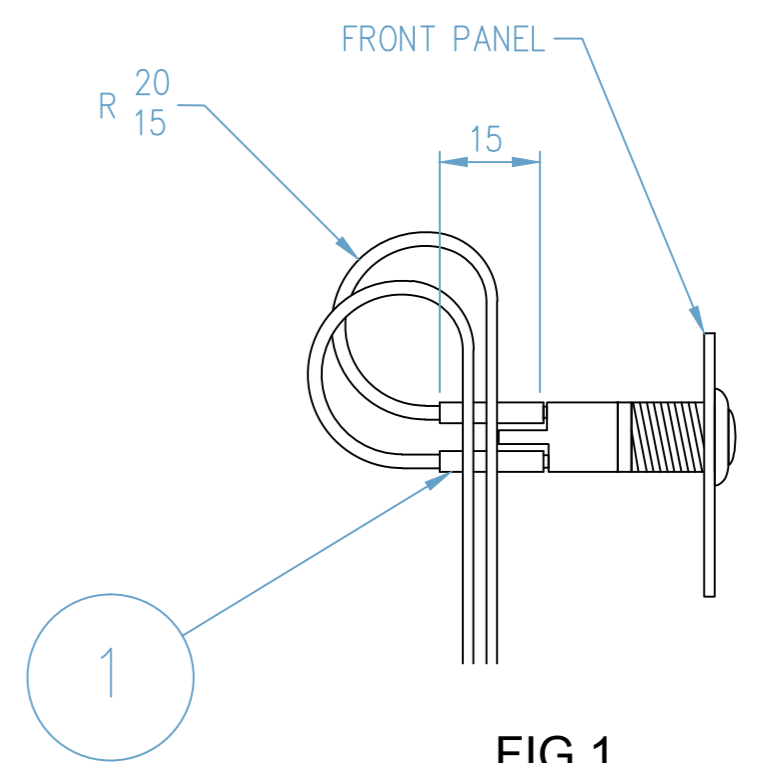
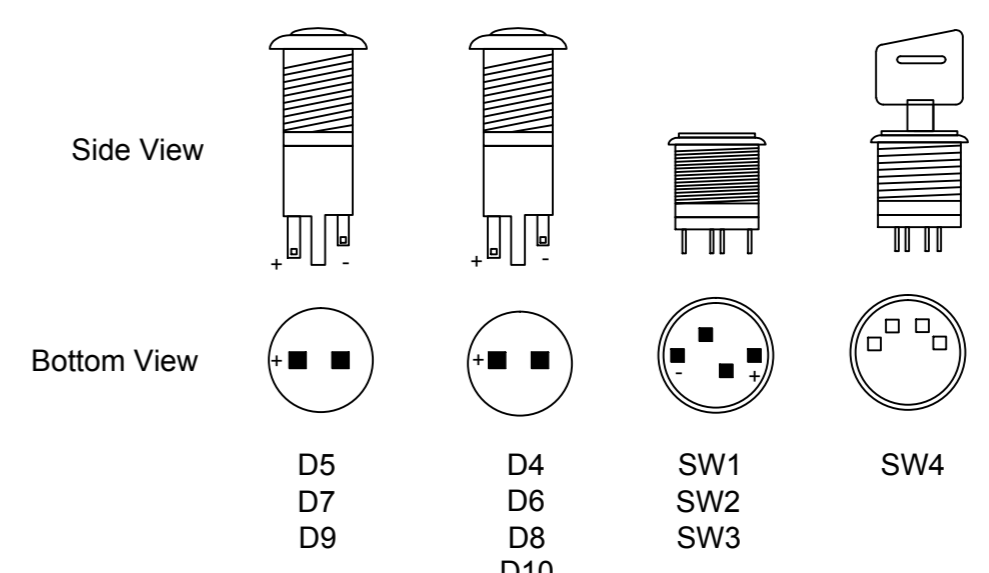
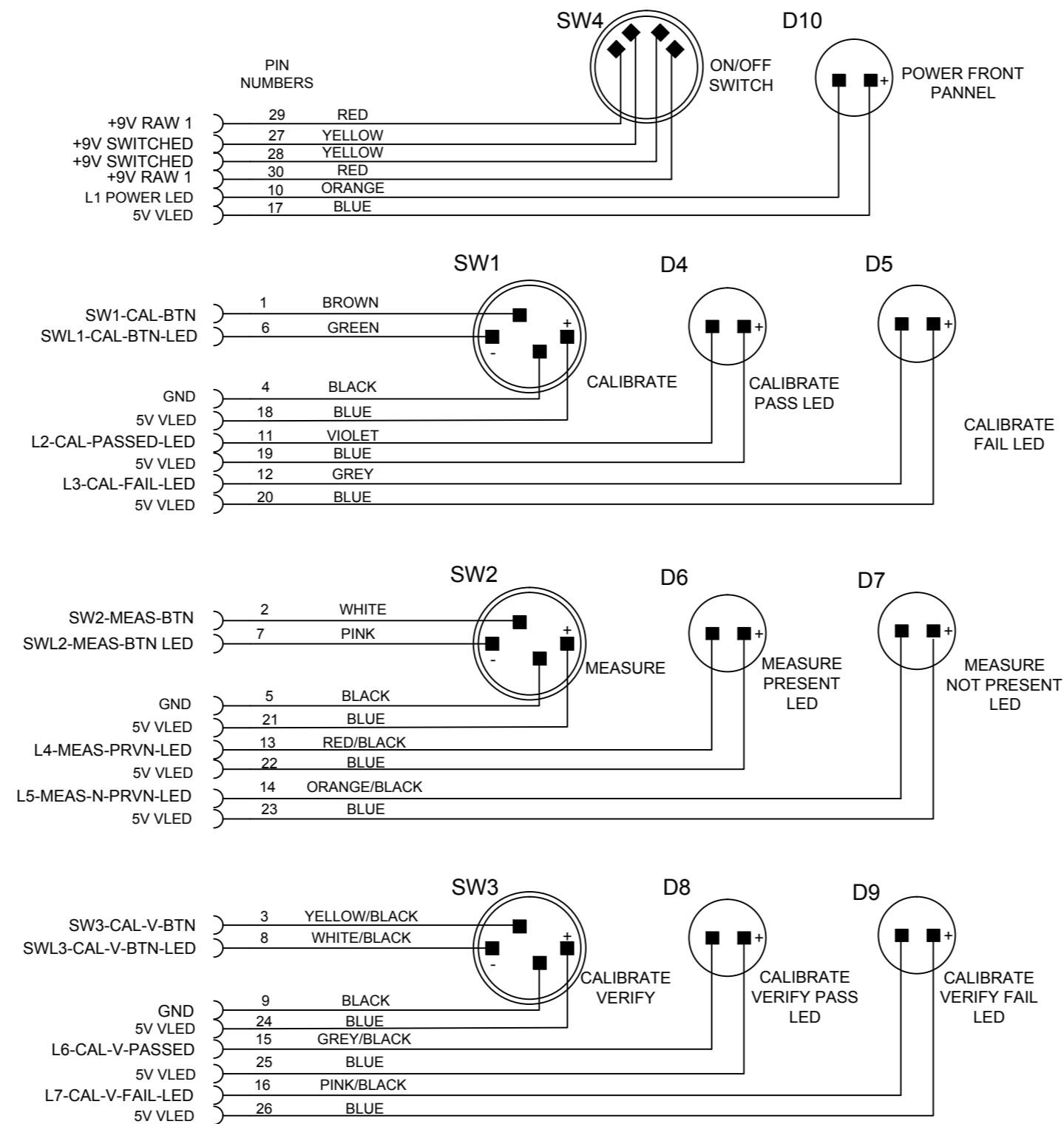


FIG 1

WHEN CONNECTING UP THE LED'S AND SWITCHES FITTED TO THE FRONT PANEL CREATE A LOOP IN EQUIPMENT WIRES AS SHOWN ABOVE

ASSEMBLY NOTES

1. POPULATE FRONT PANEL WITH COMPONENTS AS SPECIFIED. FOR POSITION OF SWITCHES AND LED'S SEE DRAWING 1AS-3065389
2. PLACE LENGTH OF HEAT SHRINK ITEM 1 AS SPECIFIED OVER EACH WIRE
3. CREATE LOOP IN EACH WIRE BEFORE TERMINATING SEE FIG 1
4. TERMINATE EACH WIRE AS SPECIFIED
5. USE HEAT GUN TO SECURE HEAT SHRINK OVER COMPONENT TERMINALS ONCE TERMINATED

MATERIAL SEE PARTS LIST	TITLE BACKPLANE TO FRONT PANEL CABLE ASSEMBLY		
FINISH	 UNITED KINGDOM - NORWAY INITIATIVE	TOLERANCES LINEAR +/-10	ORIG. SCALE N.T.S
		DIM. IN mm	
SURFACE TEXTURE	DRAWING No. 2AS-B26968	VER - REV L00-00	SHT 2 OF 2

